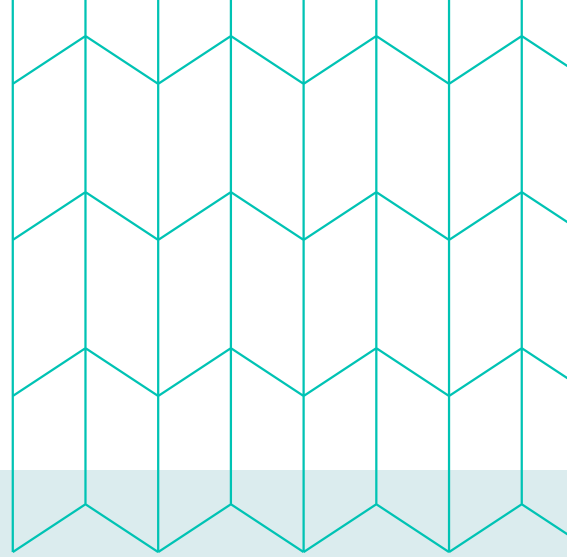
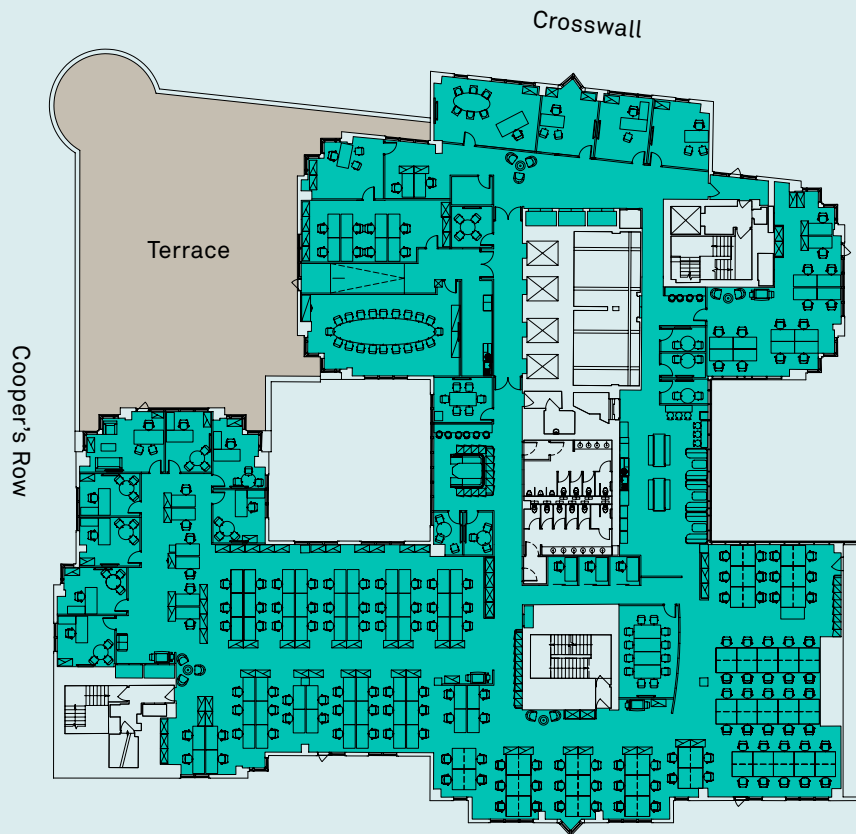


ONE AMERICA SQUAR3



7th floor

15,552 Sq Ft (1,444.8 Sq M)



Open Plan Desks	153
1 Person Office	13
20 Person Meeting Room	1
12 Person Meeting Room	1
6 Person Meeting Room	1
4 Person Meeting Room	1
2/3 Person Meeting Room	5
Quiet Room	3
Informal Meeting Pod	1
Break Out Area / Tea Point	2



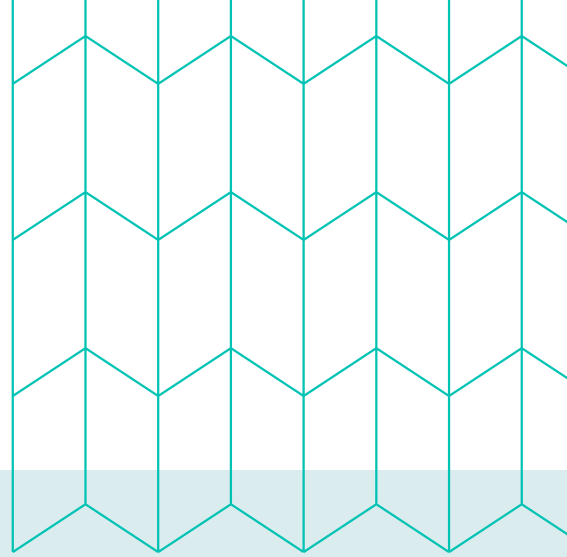
N

● Office ● Core ● Terrace

For indicative purposes only. Not to scale.

Occupancy Ratio 1:8.7 Sq M

ONE AMERICA SQUAR3



2nd floor

13,495 Sq Ft (1,253.7 Sq M)



Open Plan Desks	79
1 Person Office	14
2 Person Office	1
16 Person Meeting Room	1
10 Person Meeting Room	1
6 Person Meeting Room	1
2/3 Person Meeting Room	4
Quiet Room	4
Informal Meeting Pod	2
Break Out Area / Tea Point	2



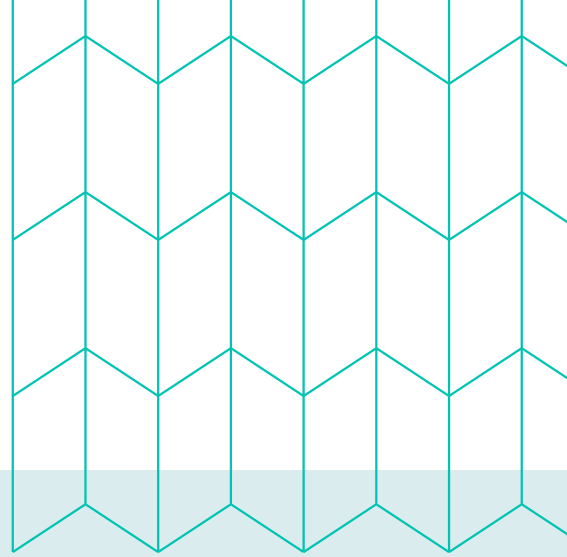
● Office ● Core

N

For indicative purposes only. Not to scale.

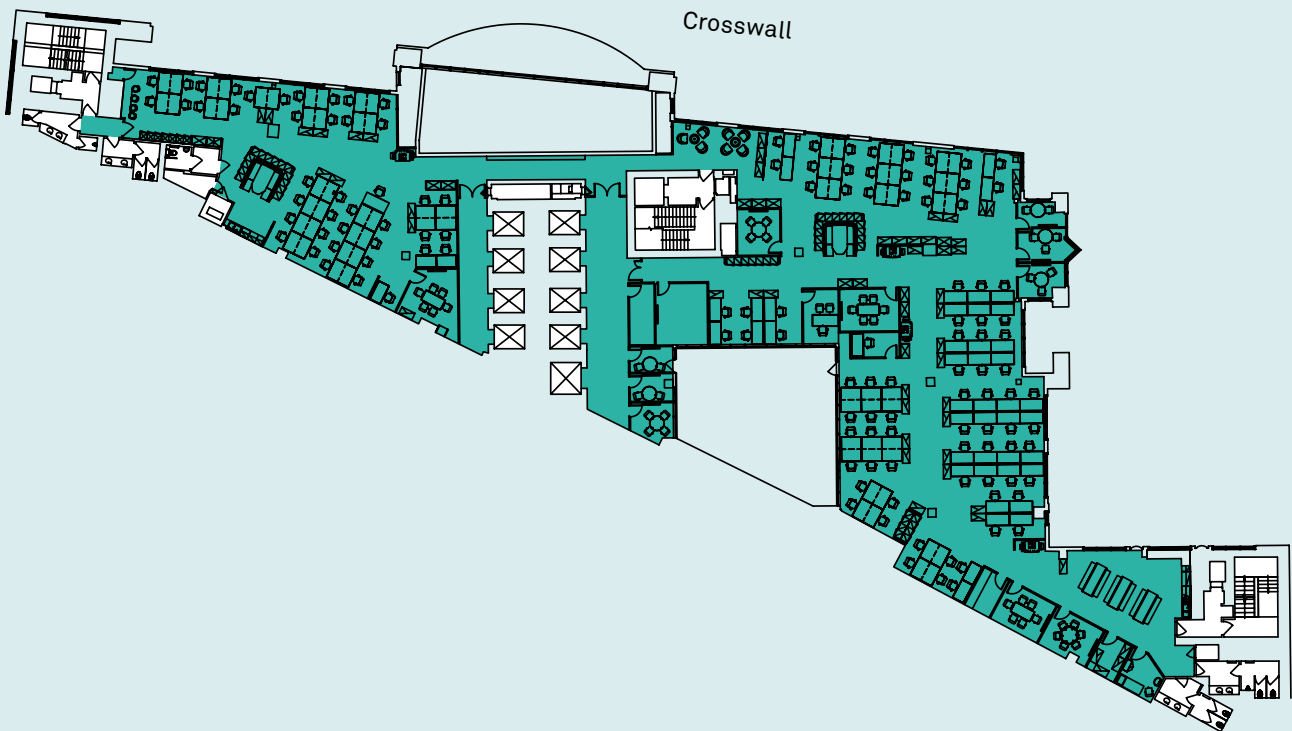
Occupancy Ratio 1:13.2 Sq M

ONE AMERICA SQUAR3



1st floor

10,671 Sq Ft (991.4 Sq M)



Open Plan Desks	123
1 Person Office	1
6 Person Meeting Room	3
4 Person Meeting Room	2
3 Person Meeting Room	2
2 Person Meeting Room	3
Study Booth	2
Quiet Room	1
Informal Meeting Pod	2
Break Out Area / Tea Point	2



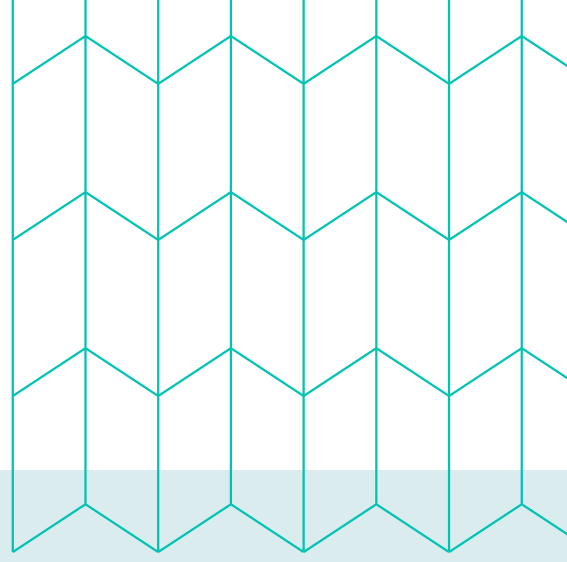
● Office ● Core

N

For indicative purposes only. Not to scale.

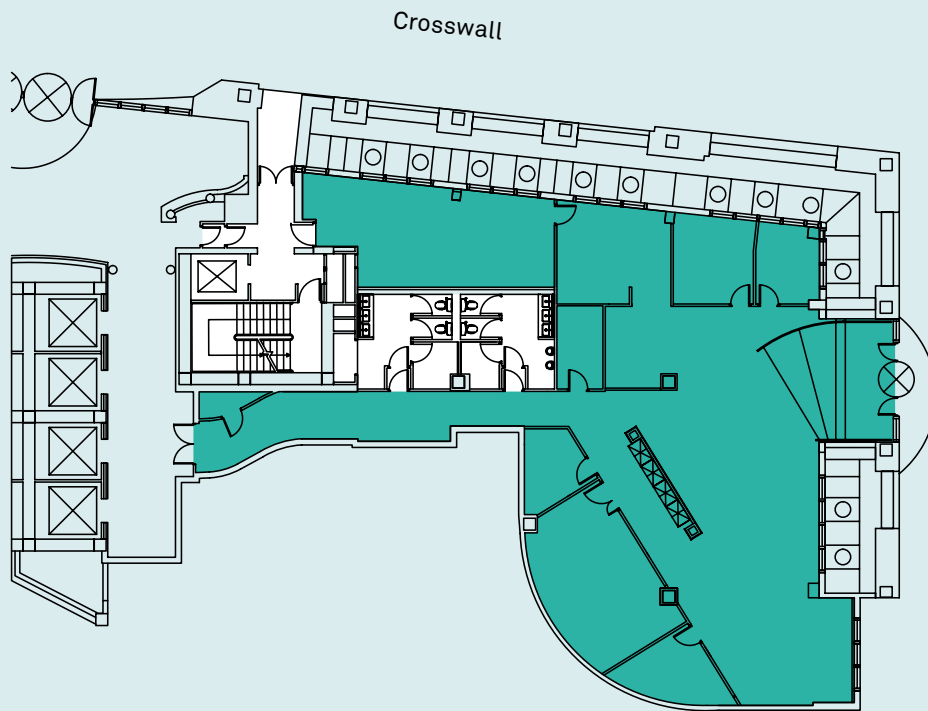
Occupancy Ratio 1:8.0 Sq M

ONE AMERICA SQUAR3



Ground floor

3,827 Sq Ft (355.5 Sq M)



N

● Office ● Core

For indicative purposes only. Not to scale.